



VF EMS SYSTEM

RTMD/EMS SYSTEM

Electronic thermostat with built-in datalogger, GPS and remote temperature data log via GSM. 5" touch display with access to various actual temperatures, datalog, and diagnosis.
Solar powered including datalog of voltage from PV cells.

Watch our EMS video here: [EMS FEATURES & FUNCTIONS](#)



SPECIFICATIONS	VALUE
Display	5" touch screen
Temperature range	-25°C to +85°C
Accuracy	±0.5°C from -10°C to +85°C
Battery Backup	72 hours
Sim Card	Supplied with global sim card
Sim Card optional	Can be supplied with local sim card (limited to specific countries)
Voltage range	10-45VDC
IP rating	54
Type	Integrated in lid of VLS appliance

SENSORS		VALUE	DATA LOGGER		VALUE
Vaccine compartment 1		YES	Temperature data		5
Vaccine compartment 2		YES	Temperature reports		30/60 days
Freezer (if applicable)		YES	Solar voltage		YES
Ice bank		YES	Compressor state on/off		YES
Ambient		YES	Lid Status/Alarm		YES
Compressor		YES	GPS coordinates		YES
Lid opening		YES	SMS/Email alarms		YES
Battery		YES			

FEATURES

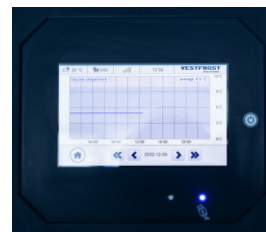
- Realtime temperature and functionality monitoring
- Setpoint settings showed in onlined dashboard
- Option to remote control unit setpoints
- 4 internal temperature sensors
- 1 ambient sensor
- Open lid sensor
- Remote alarms
- 24/7 GSM connectivity
- PV Solar Panel output sensor
- Compressor temperature sensor
- 1 x USB energy harvesting option charging e.g.phone
- Will inform health staff when weakly/monthly maintenance is required



Password access



Remote alarm logs



Real time temperature monitoring



GPS coordinates & GSM connectivity