



F-427i

BIOMEDICAL FREEZER

Our upright design is a great choice when you need a storage solution for larger quantities.



DIMENSIONS		VALUE
Outer Dimensions HxWxD		2002x595x642
Inner Dimensions HxWxD		1827x475x495
Weight Gross/Net, kg		99 / 85
Material inner cabinet		ABS
Material outer cabinet		Painted Steel
Insulation thickness		50
Insulation type		Polyurethane with Cyclopentane
Air distribution		Dynamic
Mobility		Standard: Adjustable Feet - Option: Castors
Refrigerant, Type / gram		R290 / 80
Variable Speed Compressor		Yes - Adaptive Cooling Technology
Number of probes		2
CONTROLLER		VALUE
Controller		i-Care, Touch screen
Controller language		EN, DE, FR
USB Connection		Yes
Logging		Data, Alarms & Events
Temperature graph		Yes
High/Low temp. Alarm		Yes
Open door alarm		Yes
Probe failure alarm		Yes
Power failure alarm		Yes
STORAGE		VALUE
Volume, Gross/Net, L		427 / 335
Shelves, Full/Half		5 / 1
Shelf material		Perforated Alu
FEATURES		VALUE
Lock		Yes
LED light		Yes
Battery Backup for Controller, 24h		Yes
No-Frost System™		Yes
Perimeter Heater		Hot gas
Porthole		Yes - Ø 20 mm
Dry Contact		Yes
Reference bottle		No
Door		Standard: Solid
Door Features		Automatic: Closure < 90° - Hold Closure > 90°
Door Reversibility		Yes



F-427i

BIOMEDICAL FREEZER

Our upright design is a great choice when you need a storage solution for larger quantities.

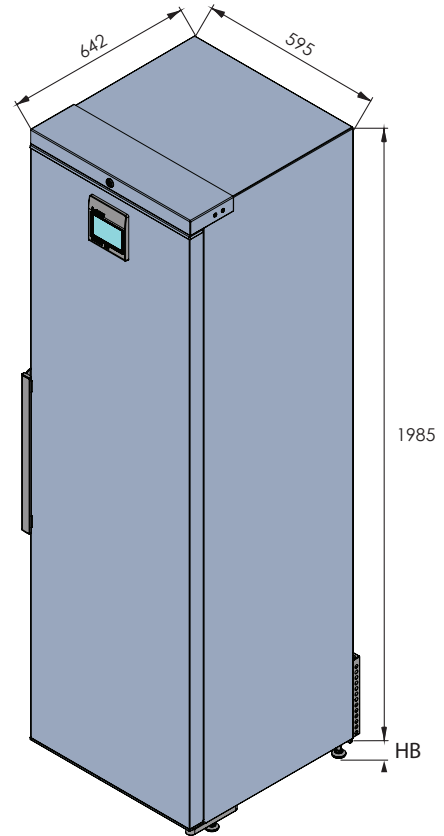
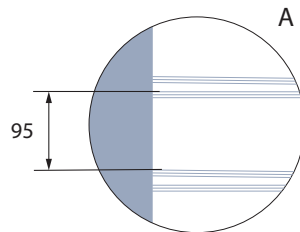
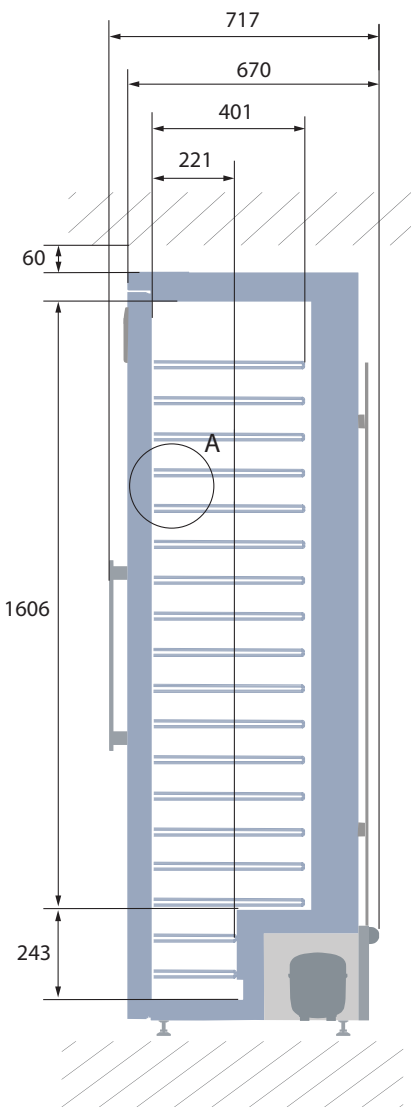
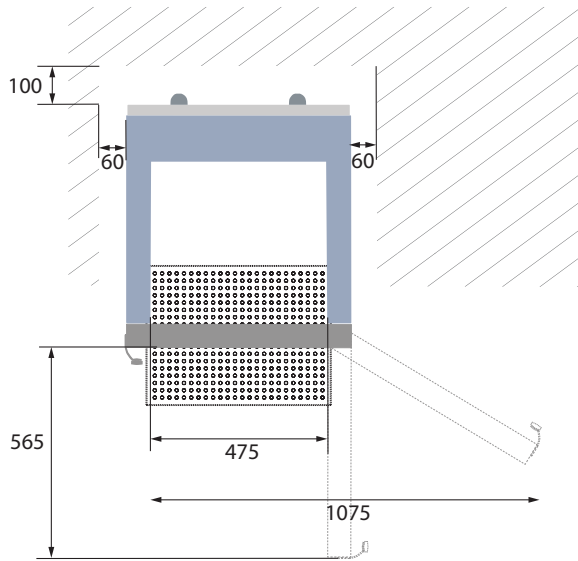
PERFORMANCE	UNIT	VALUE
All data in RT20°C		
Temperature Range	°C	-5 to -25
Uniformity in performance - difference between top and bottom	°C	+/- 3.0
Pull down time	Minutes	110 min to -20°C
Hold over time	Minutes	72 min to -10°C
Noise	dB	50
Energy Saving Mode	kWh/24h	3,181kWh/24h Set -20
Energy Consumption, kWh / 24h	kWh/24h	3,773kWh/24h Set -25
Energy year	kWh/year	1377kWh/y Set -25°
Instant Power Consumption	kW	PD 0,220/Stable 0,150
Heat Rejection	W	260
U-Value	W/m ² K	0.44
COOLING COMPONENTS		VALUE
Refrigerant/Amount (gram)		R290/80gr
Number of compressors	pcs	1
Varibel speed compressor	Yes/No	Yes
Internal air distribution (type of)		Triple Air Stream
Evaporator Fan	Yes/No/Variable	Yes
Condenser Fan	Yes/No/Variable	Yes
Number of probes	pcs	2
Defrost	Yes/No	Yes - automatic
FEATURES		VALUE
Safety thermostat	y/n/optional	No
Lock	y/n	Yes
LED light	y/n	Yes
Battery Back Up For Controller	y/n/optional	Yes - 24h
Porthole	y/n - Ømm	Yes - Ø 20mm
Dry contact	y/n	Yes
Castors	y/n/optional	Optional
Door	glass/solid	Solid
Reference Bottle	y/n/optional	No
Door closure	y/n/optional	Yes
Door reversibility	y/n	Yes
Automatic Hold 90°C	y/n	Yes
Vacuum valve	y/n	Yes
VIP (Vacum panel)	y/n	No
Perimeter heater		Hot gas loop



F-427i

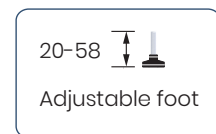
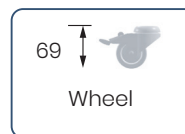
BIOMEDICAL FREEZER

Our upright design is a great choice when you need a storage solution for larger quantities.



All measurements in mm.

HB: Height of base
(HB is adjustable when given value is xx-xx)



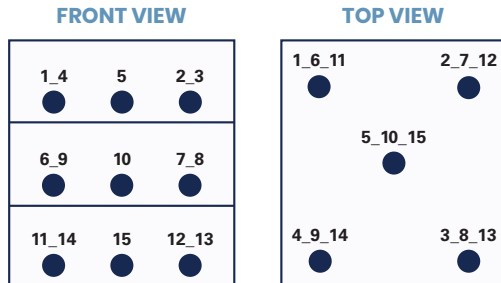


F-427i

BIOMEDICAL FREEZER

Our upright design is a great choice when you need a storage solution for larger quantities.

SENSOR POSITION



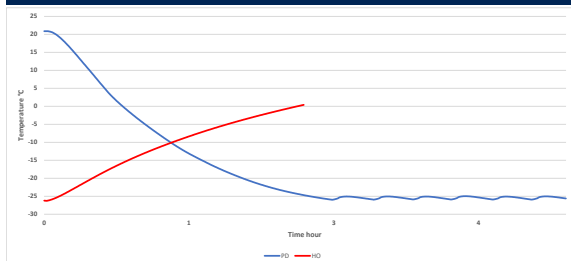
MODEL F-427i

Test type	15-point test
Test environment	Controlled conditions, empty cabinet
Ambient temperature	20°C
Humidity	60%
Set-point	-25°C
Sensor used	25gr tinned brass formed as a cylinder with a diameter of 15,2 mm
Installation	Appliance installed according to instruction manual conditions
Refrigerant	R600a

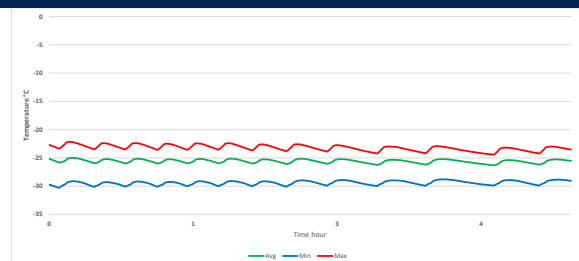
SENSOR TEMPERATURE

Sensor position	P1	P2	P3	P4	P5	P6	P7	P8	P9	P10	P11	P12	P13	P14	P15
Max	-22	-22,4	-22,9	-21,5	-22,6	-22,4	-23,5	-23,5	-22,4	-23,4	-22,6	-23,5	-23,6	-22,5	-23,5
Avg.	-22,9	-23,3	-24,1	-22,2	-23,2	-23,4	-24,3	-24,3	-23,5	-24,4	-23,6	-24,6	-24,7	-23,3	-24,6
Min.	-24	-24,6	-25,3	-23,1	-24	-24,6	-25,2	-25,3	-24,8	-25,5	-24,8	-25,9	-25,9	-24,4	-26

WARM UP & PULL DOWN



CYCLIC OPERATION



TYPICAL PERFORMANCE IN AMBIENT 20°C - EMPTY CABINET

Avg. cabinet temperature	-25,6°C
Uniformity	+/- 3,0°C
Stability in avg.	0,6°C
1 min. door open recovery to -20°C avg. temperature	15 min.
Cycle rate on/off	19 / 3 min.
Duty cycle	84%
Energy consumption - Normal mode	3,7 kWh/day
Energy consumption - Energy saving mode (-20)	3,1 kWh/day
Pull down time to -20°C avg. temperature	110 min.
Hold over time from -25°C to -10°C	72 min.
Sample temperature does not exceed	-15°C
Heat rejection	260