



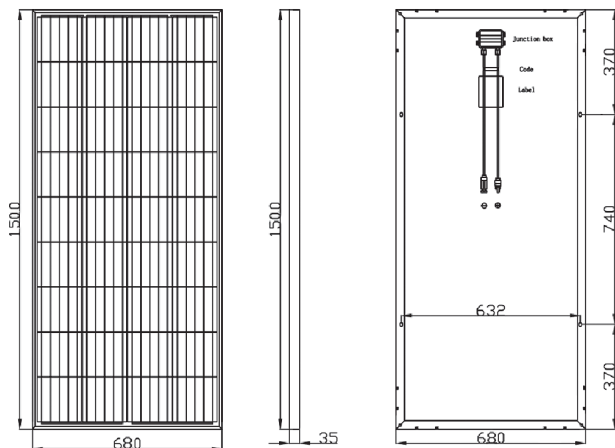
**COLD CHAIN  
EQUIPMENT**

# SOLAR PANELS

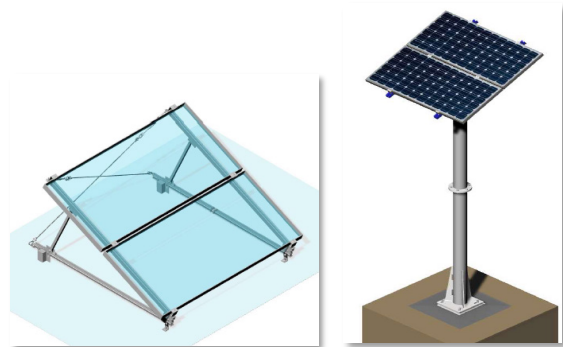
FOR SOLAR DIRECT DRIVEN APPLIANCES

SOLAR PV ENERGY KITS 2X180W DEVELOPED FOR	PACKAGING/WEIGHT DIMENSIONS
VLS 024 SDD	155 x 80 x 33 (DxWxH, cm) 78 kg
VLS 054A SDD	
VLS 094A SDD	
VLS 154A SDD	
VFS 048 SDD	
SOLAR PV ENERGY KITS 4X180W DEVELOPED FOR	PACKAGING/WEIGHT DIMENSIONS
VLS 026 RF SDD	170 x 80 x 35 (DxWxH, cm) 110kg
VLS 056 RF SDD	
VLS 096A RF SDD	

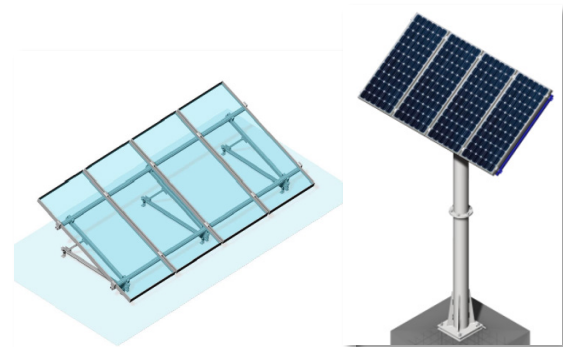
All solar panel kits can be selected with a **roof, pole** or **ground** mount.



**2 x 180 W Solar panels**



**4 x 180 W Solar panels**



1 X 180W – MEASUREMENTS & DATA	
Cell, mm.	158.75x158.75 Mono
Dimensions, mm. HxWxD	1500x680x35
No. of cells, pcs.	36(4x9)
Weight, kg.	11,5
Front glass thickness, mm	3.2 tempered glass