



VF EMS SYSTEM

RTMD/EMS SYSTEM

Electronic thermostat with built-in datalogger, GPS and remote temperature data log via GSM. 5" touch display with access to various actual temperatures, datalog, and diagnosis.
Solar powered including datalog of voltage from PV cells.

Watch our EMS video here: [EMS FEATURES & FUNCTIONS](#)



SPECIFICATIONS

Display	5" touch screen
Temperature range	-25°C to +85°C
Accuracy	±0.5°C from -10°C to +85°C
Battery Backup	72 hours
Sim Card	Supplied with global sim card
Sim Card optional	Can be supplied with local sim card (limited to specific countries)
Voltage range	10-45VDC
IP rating	54
Type	Integrated in lid of VLS appliance

SENSORS		DATA LOGGER	
Vaccine compartment 1	YES	Temperature data	5
Vaccine compartment 2	YES	Temperature reports	30/60 days
Freezer (if applicable)	YES	Solar voltage	YES
Ice bank	YES	Compressor state on/off	YES
Ambient	YES	Lid Status/Alarm	YES
Compressor	YES	GPS coordinates	YES
Lid opening	YES	SMS/Email alarms	YES
Battery	YES		

FEATURES

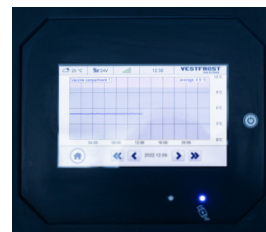
Realtime temperature and functionality monitoring
Setpoint settings showed in onlined dashboard
Option to remote control unit setpoints
4 internal temperature sensors
1 ambient sensor
Open lid sensor
Remote alarms
24/7 GSM connectivity
PV Solar Panel output sensor
Compressor temperature sensor
1 x USB energy harvesting option charging e.g.phone
Will inform health staff when weakly/monthly maintenance is required
2G connection



Password access



Remote alarm logs



Real time temperature monitoring



GPS coordinates & GSM connectivity